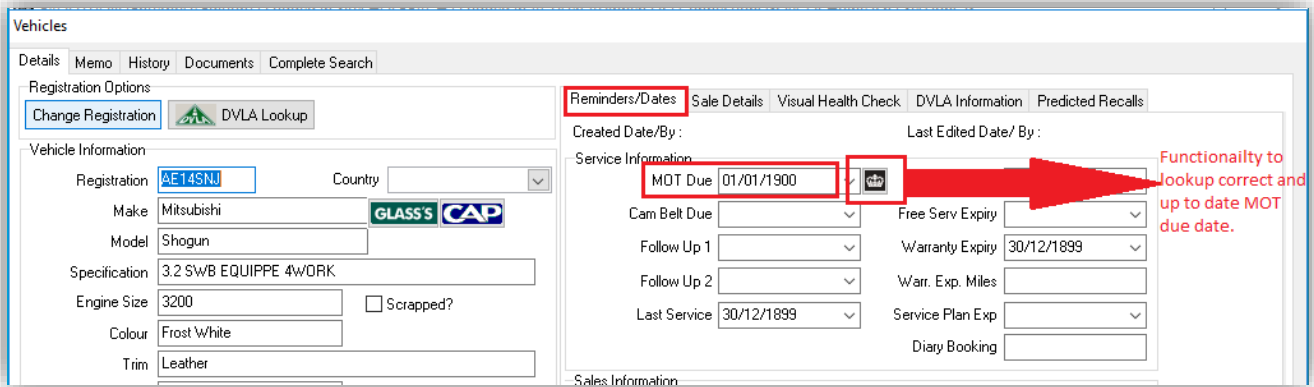
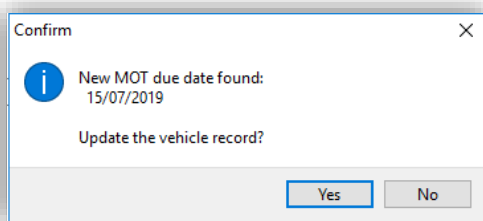


Actual screen views vary dependant on version of Evolution

We have introduced new functionality to look up an up to date MOT due date and registration date of a vehicle via integration with the official Gov.UK API.

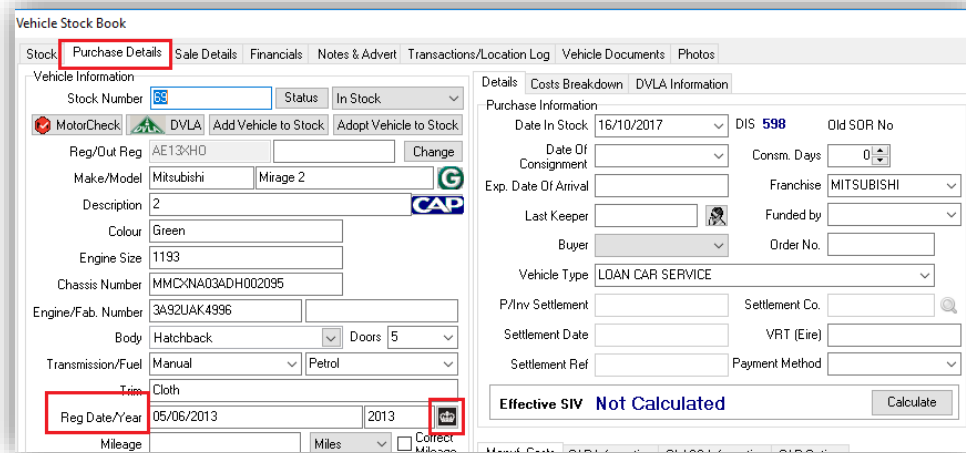


Clicking on the image of a crown will return a message with the new date (example below):



Clicking 'Yes' will update the vehicle record with the new date.

This feature can also be found in the Vehicle Stock book under Purchase Details Tab, clicking the button next to either the MOT Date or the Reg Date will automatically check both fields:



It can also be found in the Vehicle Stock Book Sales Details Tab when adding a Part Exchange to a sales order or invoicing in the service department:

